

E

D

C

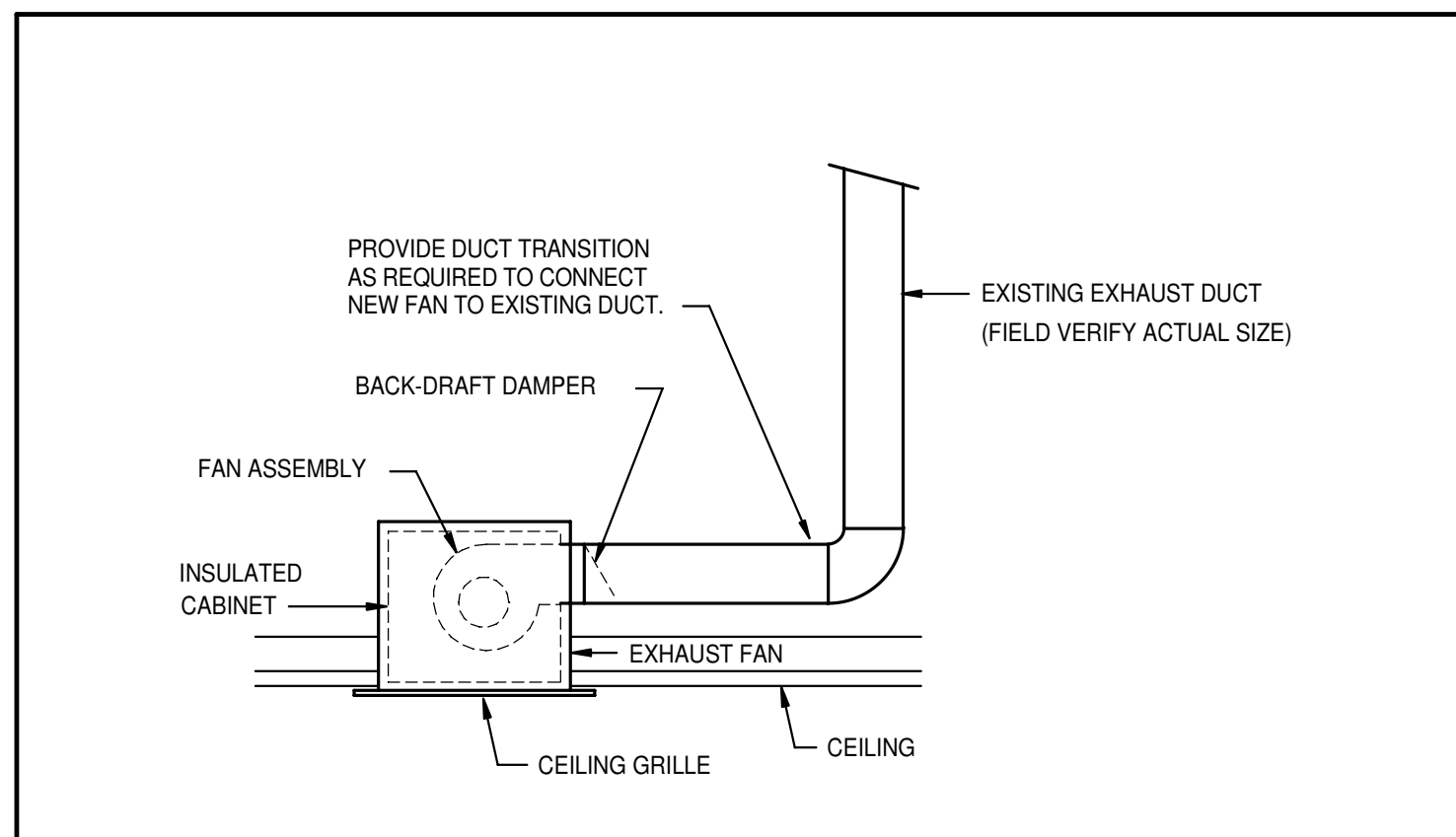
B

A

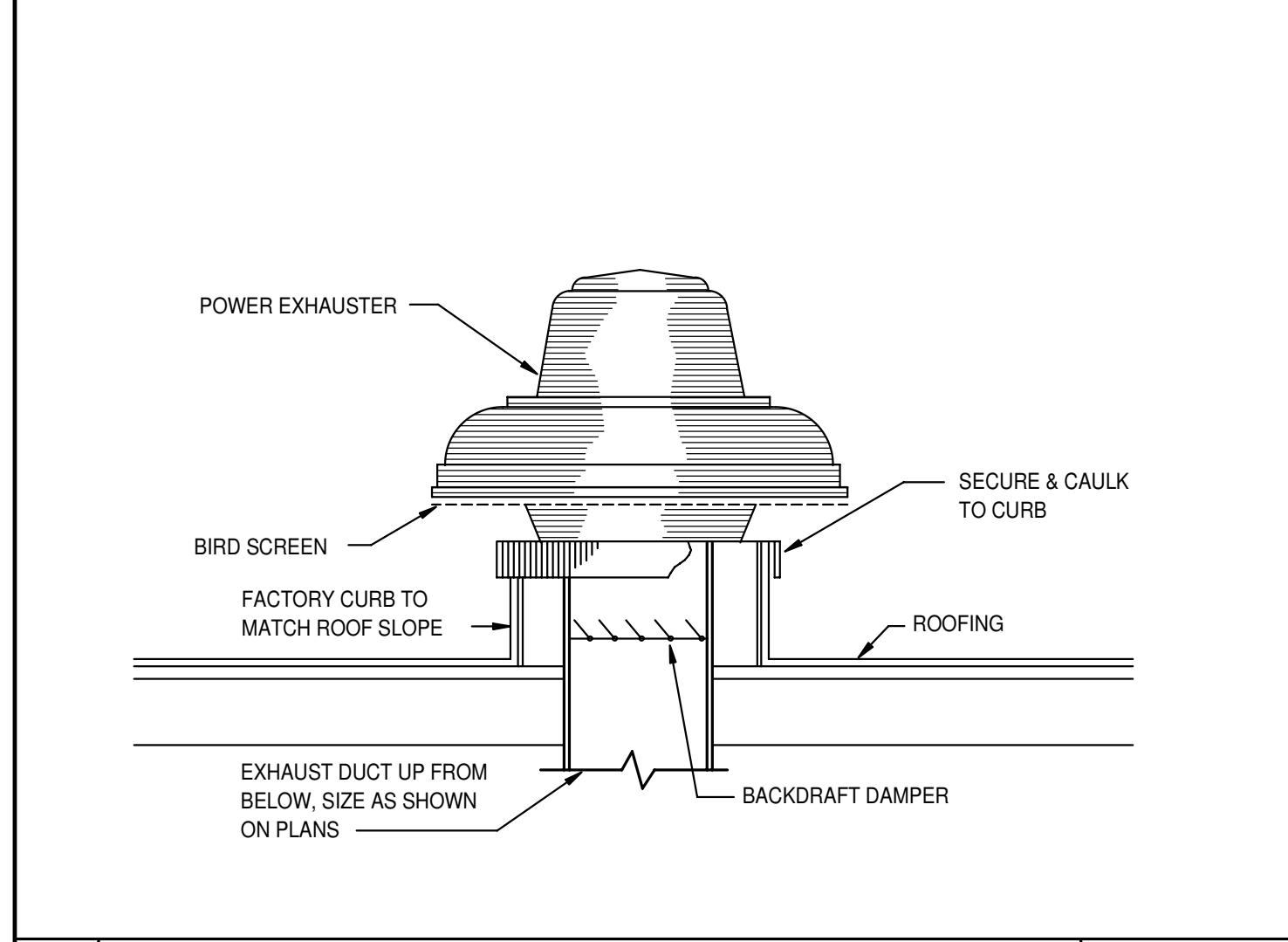
Mechanical Plan Review: APPROVED

Based upon the response received regarding the earlier review and the fact that this is an existing building where existing equipment and ductwork is being replaced. This mechanical plan is approved and will be verified for code compliance through the inspection process.

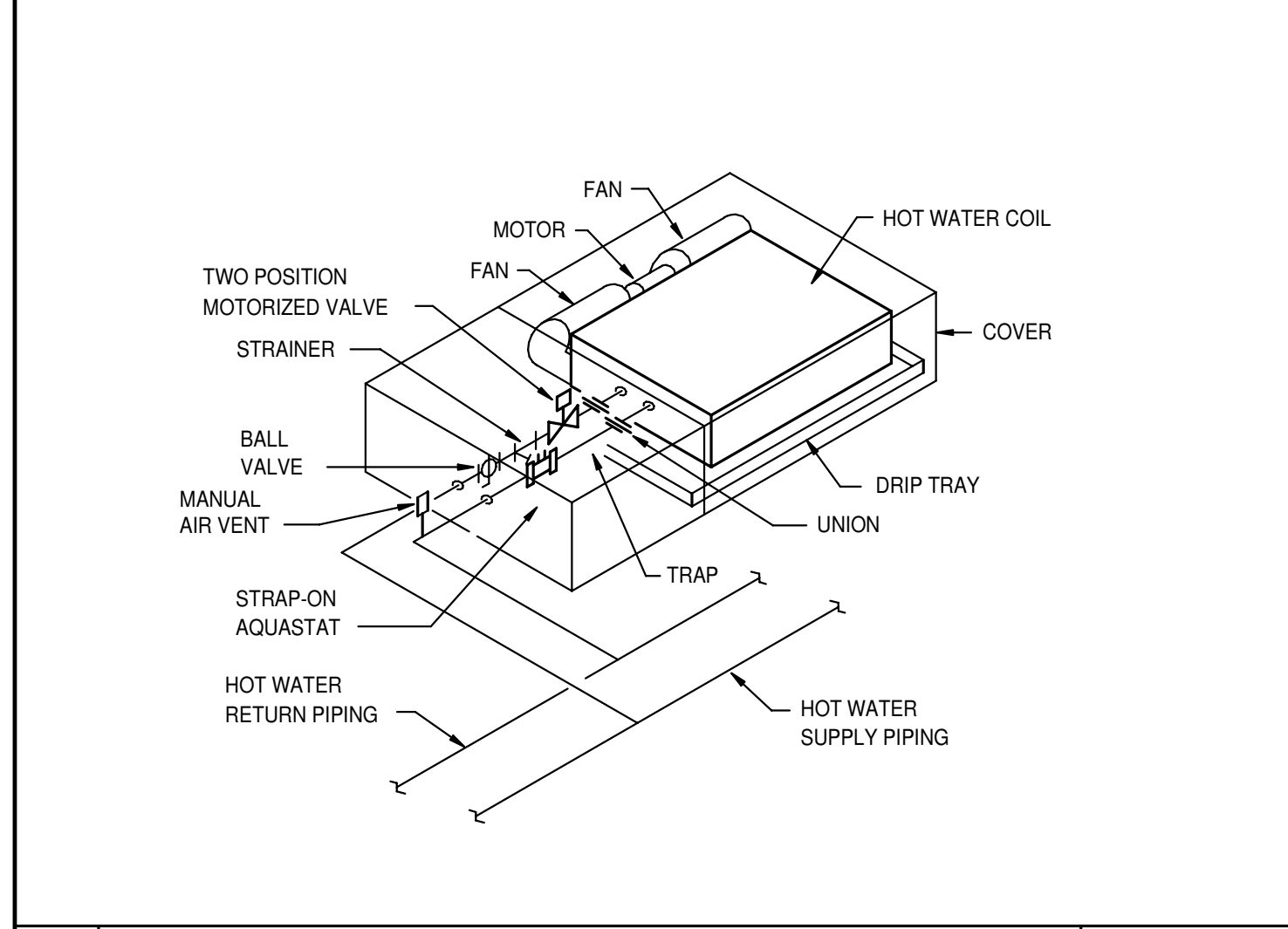
Final approval shall be based upon HVAC inspection for adherence to the 2018 IMC, 2018 IFGC, Idaho Statute Title 54 Chapter 50, stamped approved plans and manufacturers installation instructions.



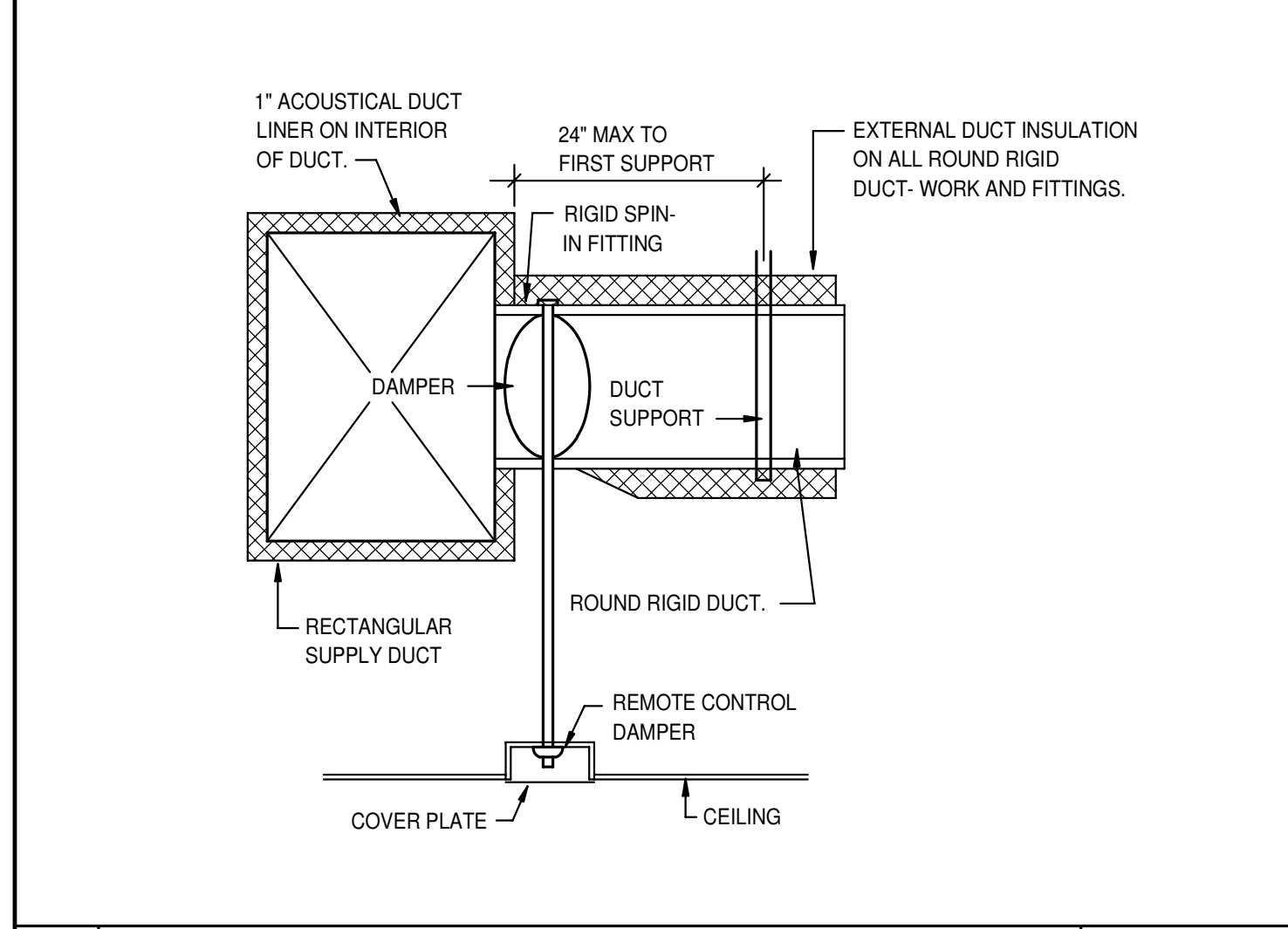
A CEILING MOUNTED EXHAUST FAN NO SCALE



B ROOF MOUNTED EXHAUST FAN NO SCALE



C UNIT HEATER PIPING DIAGRAM NO SCALE



D DAMPER CONTROL IN CEILING NO SCALE

EXHAUST FAN SCHEDULE								REMARKS
SYM.	TYPE	C.F.M.	S.P.E.	H.P.	CHAR.	R.P.M.	CONTROL	
EF 1	CEILING MOUNTED	125	.50"	100	120/60/1	710	WITH LIGHTS	TWIN CITY MODEL T150 WITH BACK-DRAFT DAMPER. CONNECT 6" DUCT TO TO EXISTING DUCTWORK.
EF 2	CEILING MOUNTED	125	.50"	100	120/60/1	710	WITH LIGHTS	TWIN CITY MODEL T150 WITH BACK-DRAFT DAMPER. CONNECT 6" DUCT TO TO EXISTING DUCTWORK.
EF 3	CEILING MOUNTED	125	.50"	100	120/60/1	710	WITH LIGHTS	TWIN CITY MODEL T150 WITH BACK-DRAFT DAMPER. CONNECT 6" DUCT TO TO EXISTING DUCTWORK.
EF 4	CEILING MOUNTED	125	.50"	100	120/60/1	710	WITH LIGHTS	TWIN CITY MODEL T150 WITH BACK-DRAFT DAMPER. CONNECT 6" DUCT TO TO EXISTING DUCTWORK.
EF 5	ROOF MTD DOWN-BLAST	2400	1.0"	1	208/60/3	1160	BLG DDC	TWIN CITY MODEL 180BE-DCRD WITH BACK-DRAFT DAMPER. MOUNT ON 18" HIGH ROOF CURB.
EF 6	ROOF MTD DOWN-BLAST	2400	1.0"	1	208/60/3	1160	BLG DDC	TWIN CITY MODEL 0180BE-BDRD WITH BACK-DRAFT DAMPER. MOUNT ON 18" HIGH ROOF CURB.
EF 7	ROOF MTD DOWN-BLAST	1800	1.0"	1	208/60/3	1020	BLG DDC	TWIN CITY MODEL 180BE-DCRD WITH BACK-DRAFT DAMPER. MOUNT ON 18" HIGH ROOF CURB.
EF 8	ROOF MTD DOWN-BLAST	1800	1.0"	1	208/60/3	1020	BLG DDC	TWIN CITY MODEL 0180BE-BDRD WITH BACK-DRAFT DAMPER. MOUNT ON 18" HIGH ROOF CURB.
EF 9	ROOF MTD DOWN-BLAST	1800	1.0"	1	208/60/3	1020	BLG DDC	TWIN CITY MODEL 180BE-DCRD WITH BACK-DRAFT DAMPER. MOUNT ON 18" HIGH ROOF CURB.
EF 10	ROOF MTD DOWN-BLAST	1800	1.0"	1	208/60/3	1020	BLG DDC	TWIN CITY MODEL 0180BE-BDRD WITH BACK-DRAFT DAMPER. MOUNT ON 18" HIGH ROOF CURB.

GRILLE AND REGISTER SCHEDULE										REMARKS
SYM.	SIZE	THROW	CFM	CONSTR.	FINISH	BRANCH DUCT	F.D.	O.B.		
ER-1	12 x 8		0 - 200	STEEL	WHITE	12 x 8	NO	YES		PRICE MODEL 535D
ER-2	10 x 10		0 - 200	STEEL	WHITE	10 x 6	NO	YES		PRICE MODEL 535D

UNIT HEATER SCHEDULE													REMARKS
SYM.	TYPE	CFM	CHAR.	H.P.	M.B.H.	E.A.T.	E.W.T.	T.D.	GPM	PIPE SIZE	VALVE	WEIGHT	
UH 1	CEILING RECESSED	250	120/60/1	1/30	10.6	60°F	180°F	20°F	1.1	3/4"	AUTO 2 POSITION	125#	MODINE MODEL WCC020 WITH INLET AND OUTLET GRILLES.
UH 2	CEILING RECESSED	250	120/60/1	1/30	10.6	60°F	180°F	20°F	1.1	3/4"	AUTO 2 POSITION	125#	MODINE MODEL CW-002 WITH INLET AND OUTLET GRILLES.
UH 3	CEILING RECESSED	250	120/60/1	1/30	10.6	60°F	180°F	20°F	1.1	3/4"	AUTO 2 POSITION	125#	MODINE MODEL CW-002 WITH INLET AND OUTLET GRILLES.
UH 4	CEILING RECESSED	250	120/60/1	1/30	10.6	60°F	180°F	20°F	1.1	3/4"	AUTO 2 POSITION	125#	MODINE MODEL CW-002 WITH INLET AND OUTLET GRILLES.
UH 5	CEILING RECESSED	250	120/60/1	1/30	10.6	60°F	180°F	20°F	1.1	3/4"	AUTO 2 POSITION	125#	MODINE MODEL CW-002 WITH INLET AND OUTLET GRILLES.
UH 6	CEILING RECESSED	250	120/60/1	1/30	10.6	60°F	180°F	20°F	1.1	3/4"	AUTO 2 POSITION	125#	MODINE MODEL CW-002 WITH INLET AND OUTLET GRILLES.
UH 7	CEILING RECESSED	250	120/60/1	1/30	10.6	60°F	180°F	20°F	1.1	3/4"	AUTO 2 POSITION	125#	MODINE MODEL CW-002 WITH INLET AND OUTLET GRILLES.
UH 8	CEILING RECESSED	250	120/60/1	1/30	10.6	60°F	180°F	20°F	1.1	3/4"	AUTO 2 POSITION	125#	MODINE MODEL CW-002 WITH INLET AND OUTLET GRILLES.

MECHANICAL LEGEND					
SYMBOL	DESCRIPTION	SYMBOL	DESCRIPTION	SYMBOL	DESCRIPTION
SA	SUPPLY AIR	[Symbol]	RETURN AIR GRILLE	[Symbol]	HAND DAMPER
RA	RETURN AIR	[Symbol]	CEILING DIFFUSER	[Symbol]	FIRE DAMPER AND ACCESS
OA	OUTSIDE AIR	[Symbol]	EXHAUST AIR GRILLE	[Symbol]	MOTORIZED DAMPER
REFR	REFRIGERANT	[Symbol]	SIDEWALL REGISTER (SUPPLY AIR)	[Symbol]	SMOKE & FIRE DAMPER
AFF	ABOVE FINISHED FLOOR	[Symbol]	SIDEWALL GRILLE (RETURN AIR)	[Symbol]	ROUND BRANCH DUCT WITH HAND DAMPER
VFD	VARIABLE FREQUENCY DRIVE	[Symbol]	PLAN NOTE	[Symbol]	RECTANGULAR SUPPLY AND RETURN AIR DUCT TAKE-OFF
T	ELECTRONIC THERMOSTAT	[Symbol]	EQUIPMENT SYMBOL	[Symbol]	TURNING VANES
S	REMOTE SENSOR	[Symbol]	MOTORIZED 3 WAY MIXING OR DIVERTING VALVE	[Symbol]	DUCT TRANSITION
1		[Symbol]	2 POSITION MOTORIZED VALVE	[Symbol]	INSULATED FLEXIBLE DUCT
[Symbol]		[Symbol]	PIPE DROP	[Symbol]	ROUND SPIRAL DUCTWORK
[Symbol]		[Symbol]	PIPE RISE	[Symbol]	
[Symbol]		[Symbol]	HWS HOT WATER SUPPLY PIPING	[Symbol]	
[Symbol]		[Symbol]	HWR HOT WATER RETURN PIPING	[Symbol]	
[Symbol]		[Symbol]	BALL VALVE	[Symbol]	
[Symbol]		[Symbol]	DIRECTION OF FLOW INDICATOR	[Symbol]	
[Symbol]		[Symbol]	LOCAL ATC PANEL	[Symbol]	
[Symbol]		[Symbol]	ELECTRIC WALL HEATER	[Symbol]	
[Symbol]		[Symbol]	HORIZONTAL UNIT HEATER	[Symbol]	
[Symbol]		[Symbol]	VARIABLE AIR BOX WITH WITH RE-HEAT COIL	[Symbol]	
[Symbol]		[Symbol]	CEILING MOUNTED EXHAUST FAN	[Symbol]	
[Symbol]		[Symbol]	ROOF TOP EXHAUST FAN	[Symbol]	

DETAILS AND SCHEDULES ARE TYPICAL FOR BOTH THE TURNER HALL PROJECT AND THE SOUTH COMPLEX PROJECT. NOT ALL DETAILS OR ALL FIXTURES MAY BE USED ON BOTH PROJECTS. REFER TO FLOOR PLANS FOR DETAIL REFENCES AND FOR FIXTURE CALL OUTS.

Engineered Systems Associates
 1355 EAST CENTER
 POCATELLO, IDAHO 83201
 PHONE: (208) 233-0501
 FAX: (208) 233-0529
 EMAIL: esa@engsys.com
 TEL # 208-233-2100

HUMMEL ARCHITECTS

Project: ISU TURNER HOUSE & SOUTH COMPLEX RESTROOM REMODEL

64 Memorial Dr Pocatello, ID 83201 DPW PROJECT NO: 21-235

Sheet: MECHANICAL SCHEDULES AND DETAILS

AGENCY REVIEW SET

BLD2106-00057
REVIEWED FOR CODE COMPLIANCE
 This approval shall not be construed to be an approval of any violation of, or variance from, Idaho's adopted codes, standards, laws or rules applicable to this project.
SEPARATE BUILDING PERMIT REQUIRED FOR CONSTRUCTION

Revisions: △

Project No: 2045
 Drawn By: M JENSEN
 Checked By: D SUDWEEKS
 Date: 9/15/21

Sheet No: M3.01